



NEWSLETTER



Kia ora e te whānau,

Well, we are officially in winter. When listing the things we loved about this season, we named coloured leaves, warm jerseys, hot chocolates and an excuse to watch movies inside. What does your whānau love about the cold months?

We've had another great fortnight with plenty happening in the life of our school.



Market Day: Last Thursday we held our annual Market day. We raised money for next year's camp-each year we pay it forward. This keeps the costs lower for all families. It's a great example of how we work together as a community so everyone has the same opportunity. It is a highlight for our whole school. Our seniors learn to work in a team to create a product, work out how to make a profit and master the art of customer service. Thank you to those of you who provided food, ideas, money to spend and encouragement. Thank you to the teaching team who worked towards this event. It was worth it!

Our Board of Trustees: We are fortunate to have a thoughtful and committed Board of Trustees who support the growth of our school. Their energy enables us to review how we are working and seek ways to improve what we provide for all our learners. Last Saturday they used part of their weekend to consider ways of doing this. Please read their current updates in this newsletter. Thank you all for your contribution to our kura. We appreciate all that you do.

English Language Learners: When a new family arrives at Newtown, we ask them what home language they speak. We call these languages their super power. Many five year olds do look a little confused at me as they consider Spiderman skills, alongside their ability to speak another language! It is a gift of our school that we are able to hear so many languages: Māori, Samoan, Arabic, Hindi, Tamil, English, Malayalam, Somalian, Tagalog, Spanish, Cambodian, Persian, Afrikaans and more! Our school receives funding to support our learners so we can offer extra English support. Approximately every three years we are asked to share how this funding is used and to identify the progress our students have made. It is a thorough and necessary part of checking one part of running our school. Thank you to all the staff and families who share their language with us. What a great thing to learn from each other.

As we head into the final few weeks of term, look for your favourite winter joys, smile at others and find time to try something new.

Ngā mihi nui,

Whaea Nicki
Tumuaki | Principal

WHĀNAUNGATANGA
CONNECTED

He iwi tahi tātou, he ako tahi tātou
We belong and we learn together

Important dates

- **Thursday 27th June** - Matariki breakfast 7:30am
- **Friday 28th June** - Matariki (SCHOOL CLOSED)
- **Friday 5th July** - Last day of Term 2
- **Sunday 21st July** - School Planting Bee 1-3pm
- **Monday 22nd July** - First day of Term 3

Welcome to our new students

- Aadhi Rahul Krishna
- Aaliyaan Hussein
- Ahana Thampi
- Franco Andaya
- Ivaan Linto
- Iqra Hussein
- Kyle Cababag
- Mariam Habib
- Madhav Mahadev

Attendance

It is really important that all children attend school every day unless they are sick. Every day attendance increases learning.

If your child is going to be away please call or email us.



04 389 6667



away@newtown.school.nz

IN THIS ISSUE

SCHOOL NOTICES
AROUND OUR KURA
BOARD OF TRUSTEE'S PĀNUI
VOLUNTEER SPOTLIGHT
COMING UP
GARDEN NEWS
SPORTS NEWS
EXHIBITION WALL
COMMUNITY NOTICES

School Notices

ces
You're invited

Matariki

Breakfast

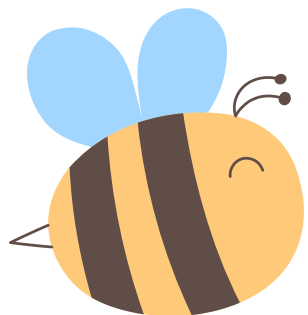
Thursday 27 June 7.30am

Meet out front of the school hall

- * **Shared Breakfast - food provided**
(please bring your own plates/cups/cutlery)
- * **Storytelling**
- * **Planting and outdoor activities**
- * **Matariki Star Art and craft activities**
- * **Tā Moko Station**



Te Kura o Ngā Puna Waiora
Newtown School
Love learning, love life!



School Planting & Fence Building Bee

Sunday 21 July 1-3pm

Help us plant more native trees to create an oasis in the city, OR handy with hammer and nails? Help us extend the height of our fence to provide a safe home for bees (and people!).

KIA WHAKAPAU KAHA EFFORT

KIA WHAKAPAU KAHA Ka whakapua i ō tātou kaha i ā tātou mahi katoa.
EFFORT We give our best in everything we do.

Around our kura

Celebrating the richness of our community's diversity



PRIDE!



We are fortunate to have a school community that is made up of diverse families. We built a photo display that celebrates this diversity and inclusion, come have a look!

This World Refugee Day 2024 we extend extra aroha to those from refugee backgrounds who have made their home in Aotearoa and especially here in Newtown...



We honour your strength and courage and celebrate the diversity you bring to our community

KIA NGĀKAU HIHIRI CURIOUS Ka mīharo, ka tūpono, ka aūaha tātou. We wonder, take risks and innovate

Around our kura

Whānau Māori Hui

On Monday the 10th June we held our first school wide whānau Māori hui for the year

This was a chance for the wider Māori school community to come together, connect, share in kai and meet other whānau in the school. Future hui are planned and we look forward to more whānau being able to come along.

Learning Comments

A good example of the different faces of learning are shown in these comments about friendship. What is your opinion on the statements below?
'I think that doing things with my friends is the best way'

'If you want a friend, find someone who is kind and caring or funny to cheer you up. A friend thinks your ideas are great.'

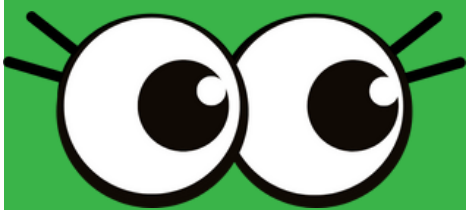
'Stress feels like you've got so many feelings that they all just pile on top of you and you can't manage it but you kinda have to'

'To make friends, ask people if they wanna be friends and play with them. Good friends help each other. Friends disagree sometimes.'

'We were trying to find out what was the favourite fruit in Tūi. Instead of counting we made a graph so we could see. We all drew a picture and stuck it on the line above the fruit we liked. It was easy then to see which was popular.' Great Maths thinking!

I have been learning to write my letters correctly. It's called handwriting. We do that so we can write words and stories and so people can read what we write. It's important to do and when I am good at it I will be able to write for the rest of my life.'

Four Eyes Foundation



Recently, your child's vision was screened at school with the support of the Four Eyes Foundation. If your child needs a follow-up appointment with an optometrist, they will receive a notice.

Please keep an eye out for a paper copy in your child's school bag.

KIA MANAAKI Ka whakamana tātou i ngā rongō o te katoa.
RESPECTFUL We value the thoughts and feelings of each other.

Board Pānui

Kia ora koutou katoa

We hope this panui finds you all well. We're almost halfway through the year already, and while it is busy for families, we hope you find some time to connect with those important and closest to you, as we celebrate a number of important events at our kura and in the wider community in the coming weeks.

In this pānui, we have updates on:

- SWIS' zoning proposal
- The beginning of our work on a Board constitution, to embed our co-governance and representation arrangements on our Board
- Playground projects
- Community Engagement team: Special thanks to Newtown School and our rich community

South Wellington Intermediate School (SWIS), is developing an enrolment scheme. The purpose is to avoid role numbers exceeding their capacity and ensure the application processes are fair and transparent.

SWIS is supported by the Ministry of Education in seeking feedback from the community on its proposed enrolment scheme. This includes a "Home Zone" and "Out of Zone Enrolment" definition.

The Board will suggest to SWIS that we expect any student/raukura of Newtown school is eligible to attend SWIS, should they wish. We will also suggest that whānau from Ngāti Kotahitanga, from out of zone, should be eligible to attend SWIS, should they choose.

In addition, we encourage wider community feedback on this process and have included the proposal. You can send your feedback here, network.learning@education.govt.nz, by 10 July 2024.

Board constitution - call for subcommittee members

We are working on the Board Constitution, so we have a strong co-governing, Te Tiriti based Board into the future, in preparation for Board elections in 2025. We will consult with the community on this work. In the meantime, if you would like to help us with this mahi on a Board subcommittee, please get in touch with the Board at chair@newtown.school.nz

Help with playground projects

Te Kura o Nga Puna Waiora- Newtown School needs your help!

We would like to achieve a number of playground projects that would make our kura safer and enhance the active play and learning of all our learners.

The board is looking for members of our community to assist in managing these. If you or someone you know is enthusiastic about this idea, with time, energy and experience in managing projects, big or small please email us at chair@newtown.school.nz

We envisage that this should take 6-9 months to complete.

Community / Engagement events:

Newtown School community celebrated Samoa Language Week, honouring the culture's rich heritage and distinctiveness. Thank you to the staff and our community for orchestrating the remarkable Market Day, where Newtown students demonstrated exemplary leadership and active participation, supported by their Whānau. It was truly enriching to experience the diverse array of cuisines, a testament to our community's multicultural richness. Your collective efforts have made this celebration an outstanding success. Thank you for your unwavering support and dedication.

Ngā Mihi Nui,
Board of Trustees

KIA WHAKAPAU KAHA **Ka whakapua i ō tātou kaha i ā tātou mahi katoa.**
EFFORT **We give our best in everything we do.**

Ngā mihi nui

Thank-you to our volunteers

Newtown School is lucky to have an incredible group of volunteers who help to make our community what it is.

A massive thank-you to our board of trustees for all they do. Thank-you Joe, Nick, Naomi, Jess, Trey, Fatima, Shannyn.

Ngā mihi nui to our regular volunteers in the classroom Mrs Mac, Nicole Lew, Ngaire, Vonette and also to our Kiwiclass recruits Nelly and Mary.

Thank-you to all the whānau who coach, organise, fundraise, garden, fix bikes and accompany groups on excursions!

We appreciate everything that you do for our kura, a lot of things couldn't happen without your support.



Volunteer Spotlight

Mrs Mac come to Tūi on a Monday and Tuesday every week. She doesn't get paid, but comes just because she loves us. Mrs Mac was a teacher at Newtown School in the older days. She knows some of our Mums and Dads because she was their teacher - now she is our teacher. Mrs Mac reads to us, helps us with our literacy activities and gives us great cuddles. Thanks Mrs Mac, we are glad you come to help us.



Aroha Nui !!
the Tūi Tamariki

Meet Mrs Mac



KIA MANAHAU
RESILIENT

E hia hinganga, katū tonu, ka ako tonu
We keep trying and learn from what we do

Coming Up

- Thursday 27 June - Matariki Celebrations
- Monday 1 July - Newtown's got Talent
- Thursday 4th July - Celebrating Somalian Independence Day with songs, games and shared food.

Biking News

Biking Joy

Helpers needed!

A huge thank you to Paul Wilson for spending a few hours fixing our damaged bikes. It's a privilege to be able to offer biking to all students but in order to keep these bikes in good shape please talk to your child about using these with respect.

We need to regularly repair punctures, pump up tires, oil and fix broken parts, so if you can help once a month, please contact taniaa@newtown.school.nz or pop in and see Tania.



Garden News

Garden Goodness

Our ākonga have been learning how to turn our food scraps into compost by using fallen leaves, old cardboard and coffee husks - its been fun and stops our compost smelling.

We've also had some beautiful kai cooked using vegetables from the garden; herb pesto (made into parcels using silverbeet) and a chinese cabbage stirfry.



GARDEN TO TABLE

HERB & SUNFLOWER SEED PESTO

Season: Year round
From the garden: Fresh herbs, garlic, lemon
Type: Side dish
Difficulty: Easy
Country of origin: Italy
Serves: 30 small tastes
Source: Joanne Harland

Equipment

- Measuring cups and spoons
- Small frying pan
- Wooden spoon
- Lemon juicer
- Box grater
- Cook's knife
- Chopping board
- Food processor or stick blender
- Bowls to serve

Ingredients

- 3-4 cups herbs (packed firmly) – e.g. parsley, coriander, basil, mint
- 1.5 cups toasted sunflower seeds, or other nuts
- 3 cloves garlic
- 1 lemon
- 3/4 cup olive oil
- ½ teaspoon salt, to taste
- ½ cup Parmesan or tasty cheddar cheese

How to make it

1. Toast the sunflower seeds in a frypan until browned, stirring regularly so they don't burn – scoop them out into a bowl and let them cool.
2. Pick the leaves off the herbs, removing the stalks that you don't want to use (e.g. mint and basil stalks. Parsley and coriander stalks can be used.)
3. Zest and juice the lemon.
4. Peel and chop the garlic.
5. Grate the cheese on the fine part of the grater.
6. Put the sunflower seeds in the food processor and pulse until they are rough crumbs or put in a medium bowl and blend with the stick blender.
7. Add parsley (or herbs), salt, 1 teaspoon of the lemon zest, lemon juice and garlic, whiz until finely chopped and smooth. Add the cheese, then pour in oil slowly while blending until it reaches the desired consistency.

Notes:

- Pesto means "to pound, to crush" in Italian. It's traditionally made with basil, pine nuts & parmesan cheese but you can make it with herbs, greens (eg. spinach or rocket). Pine nuts are expensive but other nuts or seeds work well and you can use any semi-hard cheese instead of parmesan.
- Pesto is delicious served with crackers, pita breads, flat breads or with carrot/celery sticks. It goes very well with tomatoes. You can also put it in your sandwiches, stir it through pasta or dollop it on top of a pizza. Pesto can be frozen in small containers for later use.

Skills:

- Chopping, zesting*

* Zest: To remove the outer coloured part of the peel of citrus fruit to flavour a dish. This can be done with a vegetable peeler then chopped up, with a zesting tool that removes fine shreds of zest, or on a fine grater. Avoid pith (the white part under the top coloured layer) as this is bitter.

Sports News

Sports update

(Interzones Cross country results:

Tyler Cain Year 4 boys placed 49th

Mila Ward Year 4 girls placed 27th

Kade Tocher Year 5 boys placed 55th

Charlie Cain Year 6 Boys placed 37th

All runners tried really hard and showed our school values throughout the competition. They showed incredible sportsmanship at this event.

Exhibition Wall

'Waitangi masterclass exhibition'

Mon 24th - until Friday 5th of July

The Newtown School exhibition wall

The final major exhibition to round off term 2 is upon us!

This coming Monday Newtown School celebrates a fine show of artworks created by a selection of talented artists from Whānau Waitangi. For 8 weeks of term 2 a group of 10 students who put up their hand to be in a masterclass started the day with resident artist and drawing tutor Paul Forrest.

The artists in this class have been regular exhibitors since joining Newtown School. The subject for this term was portraits.

"Together under my guidance with their inherent skills as artists we've put together a collection of artworks that capture some of the levels of excellence achieved over the 6 weeks so far. These young people have worked hard and were willing to take on challenging tasks to achieve this level of excellence. Well worthy of celebrating. We all enjoyed it and learned a lot about observation and the craft of drawing," says art wall curator and teacher Paul Forrest.

The exhibiting artists opening Monday are Daisy Hollings-Baird, Moira Schneider, Milla Ray Robertson, Fran Watson, Conner Arnold, Edi Shore, Zeeya Adhikara, and Sunny Newson.

Come and have a look and support their efforts. Yet another great exhibition. I recommend you check it out on 'The Exhibition Wall' at Newtown School. Two weeks only.



KIA MANAAKI
RESPECTFUL

Ka whakamana tātou i ngā rongo o te katoa.
We value the thoughts and feelings of each other.

Community Notices

Come & celebrate

WORLD REFUGEE DAY

Saturday 22 June 2024
11 am - 3 pm
NAENAE COLLEGE 910 HIGH ST, AVALON



free event

Live performances • Delicious food • Henna • Music • Activities for children • Cultural dances

A fun day for the whole family!

FREE BUSES
WELLINGTON, MASTERTON, PORIRUA and LEVIN
Limited spaces. Please contact Betty: info@crf.org.nz
Text/Viber/WhatsApp: 022 104 0975



ChangeMakers Resettlement Forum • **HOST INTERNATIONAL** • NEW ZEALAND RED CROSS • ENGLISH LANGUAGE PARTNERS • **HUTT CITY** • **WELCOMING COMMUNITIES** • **VOICE OF ARŌHA**

PUKEAHU NATIONAL WAR MEMORIAL PARK

Pukeahu Park Whānau Open Day

Celebrating Matariki

FREE ENTRY

Saturday 6 July
Pukeahu Education Centre and Park

10am Taonga Tākaro Magic with Tū Mātāu Ora
11am Waiata with Awerangi and Andy
1pm Make your own Matariki star

Park walking tours will be running between 10am and 2pm.

Limited spaces are available, free RSVP using the QR code
Pukeahu Education Centre: 191 Tory Street, Wellington

SCAN TO RSVP




IBU - WU - BNUJ PRESENTS

JULY FOOTBALL HOLIDAY PROGRAMME

JULY 9-11 + JULY 16-18

IMPROVE YOUR SOCCER TECHNIQUES & SKILLS

\$45 PER DAY - 10% DISCOUNT FOR 5 CONSECUTIVE DAYS
MORE INFO AT WWW.ISLANDBAYUNITED.ORG
WAKEFIELD PARK, ISLAND BAY



YOUNG ARTISTS

Creative School Holiday Workshops

Spend your next school holidays with Inverlochly Art School!

Children's & Young Artists' Holiday Programmes

FOR AGES 6-10 YEARS:
MON-FRI 8-12 JULY 9-10:30 DAILY
MON-FRI 15-19 JULY 9-10:30 DAILY

FOR AGES 10-13 YEARS:
MON-FRI 15-19 JULY 12-50 - 2:30 DAILY

Our school holiday programme has been designed to challenge and encourage children & young artists who love art. Both programmes offer a mixed media experience where drawing, painting and sculpture are used to teach the creative possibilities of various art genres.

123 of Painting for Teens
MON - WEDS 15-17 JULY 9 AM - 2 PM DAILY
SUITABLE FOR AGES 15+
Journey through the basic elements of painting in acrylic paint in this introduction to painting workshop.
With an emphasis on simple beginnings, lessons will include colour theory, skin tones & structure and composition.
[learn more](#)

Jewellery Making for Teens
MON 8 JULY & MON 15 JULY FROM 10 AM - 1 PM
SUITABLE FOR AGES 12+
Craft your own rings in this introduction to metal-smithed jewellery making!
In this quick paced one session workshop with practicing jeweller and artist Thom Richards, you'll learn some metalworking fundamentals to turn raw metal into shining wearable rings.
[learn more](#)

DRAW IT OUT - Listening to Self
TUESDAY 16 JULY 10 AM - 12:30 PM
SUITABLE FOR AGES 15+
Discover Drawing for Wellness with Interactive Drawing Therapy Facilitator, Lara Phillips.
Similar to meditation or journaling, this practice guides you to draw out where you are at, and discover your own inner guidance.
[learn more](#)

Pottery for Teens
TUES - THURS 16-18 JULY 10 AM - 12:30 PM DAILY
SUITABLE FOR AGES 10-15
Learn how to properly prepare clay for the kiln, and various handbuilding construction techniques.
Your work will be bisque fired which will allow you to paint your pottery afterward if you choose.
[learn more](#)

Draw, Paint, Sculpt for Teens
SATURDAY 13 JULY 10 AM - 2:30 PM
SUITABLE FOR AGES 12-18 YEARS
Explore drawing, painting and sculpting from still life in this one day taster workshop.
Discover the art of sketching, composition, colour mixing and application; and study of the subject from multiple angles.
[learn more](#)

Whānau Sculpture with Clay
WEDNESDAY 10 JULY 1 PM - 5 PM
THURSDAY 11 JULY 10 AM - 12 PM
SUITABLE FOR AGES 6+
Learn how to sculpt out of pottery a dinosaur, dragon and another animal of your choice. Your creations will be fired once (bisque) and can be decorated with paint at home.
Each booking admits one adult and one child.
[learn more](#)

Whānau Sea Glass Ring Workshop
FRIDAY 12 JULY 10 AM - 5 PM
SUITABLE FOR AGES 15+
Design and create unique rings together out of silver and foraged sea glass 'gems'.
Each booking admits two people - one teen and one adult.
[learn more](#)

Whānau Suminagashi Paper Marbling Workshop
SUNDAY 14 JULY 10 AM - 11 AM
SUITABLE FOR ALL AGES
Discover the Japanese art of paper marbling - suminagashi!
This workshop is all about spontaneity and experimentation, and suited for all levels of experience. Each booking admits one adult and one child.
[learn more](#)

www.inverlochly.org.nz • inverlochlyartschool@gmail.com • 04 959 2177

KIA MANAHAU
RESILIENT

E hia hinganga, katū tonu, ka ako tonu
We keep trying and learn from what we do