



NEWSLETTER



Kia ora e te whānau,

And just like that, Term One is finished!
We have had a great start to this year with interesting learning and progress.

Highlights to finish with:

- **Raukura reveal** - What a stunning piece of art from our tamariki, kaiako and Ruth. Yet again this has been a powerful example of an artwork that acknowledges mana whenua in this rohe, Te Atiawa and that created a connection and sense of belonging for our tamariki and whānau who whakapapa to Te Atiawa me Taranaki whānui.
- **Eid, Easter and Passover** shared food. A number of parents commented on how much they appreciated the integration of faiths being acknowledged in a respectful way. This is a strong example of how we notice the times of the year that are important to people in our community.
- **Te Reo Māori** across our kura is on the increase. Visitors to our school remark on how much they hear, our learners' confidence and the desire they show to keep learning more.
- **Sport** - Diving, football, mini polo, netball, basketball. Keep an eye out for all the sports on offer for our tamariki. It is such a powerful way to learn all sorts. It can teach patience, strength, disappointment, fair play, leadership, encouragement and fun!
- **Resource Teacher support** - thank you to staff and parents that wrote to support the current proposal that defunds our precious resource teachers(Hlne and Jenny). They have talked of how humbling it is to be supported and cared for so strongly by a community. What a great example of how we want to be.
- **Kaimahi** - signs of a fantastic school reside with our staff. I am very grateful for their care, insight, their delight with our learners and always thinking in creative and interesting ways.

At this week's staff meeting we named **what has brought us joy** this term. Below are some examples of what kaimahi are saying about our kura...

- Our tamariki have a pride and freedom to be themselves and are accepted and celebrated because of it.
- Every child is seen
- Children are settled, curious, and creative.
- We are part of teams that support, laugh, look after each other, care, smile.

SPECIAL ANNOUNCEMENT
Two students above 90% attendance
in Term 1 have won a prize.
Violet and Robbie please come to
the office to collect your prize.

Thanks for all your support for your children...for lunches, sunhats, pick ups, involvement in sport, listening, saying no when needed, laughing, reading and dreaming with them.
Have a wonderful two week break. See you back on Monday 28th April.

Ngā mihi nui,
Whaea Nicki
Tumuaki | Principal

**WHĀNAUNGATANGA
CONNECTED**

He iwi tahi tātou, he ako tahi tātou
We belong and we learn together

Important dates

- 11 April - Last Day of Term 1
- 28 April - First Day of Term 2
- 2 June - Kings Birthday-Public Holiday (School closed)
- 3 June - Staff only Day (School Closed)
- 27 June - Last Day of Term 2

Welcome to our new student

- Jah-rose Rangiwetu

& look out for lots of new students starting in Term 2!

ARRIVAL TIME AT SCHOOL

How your child starts the day is important. Being at school in time to start the day with their classmates and teachers sets them up for a positive day of learning.

Please aim to have your students at school by 8:40am ready in class by 8:55am.



Attendance

It is really important that all children attend school every day unless they are sick. Every day attendance increases learning.

If your child is going to be away please call or email us.



04 389 6667



away@newtown.school.nz

IN THIS ISSUE

SCHOOL NOTICES
SCHOOL HOLIDAY ACTIVITIES
AROUND OUR KURA
SPORTS
ARTS
GARDEN GOODNESS

V C H V O V H Notices

Every little bit helps!

PLAYGROUND FUNDRAISING



Help raise funds for Newtown School

New World Newtown has partnered with Newtown School and you can help to raise funds each time you do your grocery shopping.

This is a great way to raise extra money for our school through the support of families/friends/relatives who shop at **New World Newtown**. Every time you shop at **New World Newtown** and present your Clubcard, **Newtown School** will receive 1% of the total spend!

The more families signed up for the programme who scan their Clubcard at the checkout every shop, the more funds you can help raise toward our new playground!

How does it work?

1. Register your Clubcard with the **Newtown School office**.
2. Shop at New World Newtown and scan your Clubcard with every shop
3. New World Newtown will then donate 1% of all sales made with participating Clubcards scanned to Newtown School to help raise funds for a new playground.

Please email your clubcard number to admin@newtown.school.nz or pop into the school office

HEALTH NOTICE

Diarrhoea and vomiting

We have been notified that there are cases of crypto in the Wellington Region, please be vigilant in washing hands, notify the school office if your child has had diarrhoea or vomiting and keep them home for 48 hours from the last bout of diarrhoea or vomiting.

HAND WASHING

Regularly washing hands prevents the spread of a range of illnesses including colds, flu and tummy bugs.

Wash your hands before preparing or eating food and after blowing your nose, coughing and sneezing, and visiting the toilet.

1. Wash your hands for at least 20 seconds with soap and warm water.
2. Dry your hands for 20 seconds with a dry towel or paper towel.

If soap and water are not available, use hand sanitiser. Look for one with 60-80% alcohol. Hand sanitiser is a good alternative however it is not as effective against viruses as soap and water.

For more information: healthify.nz/hauora-wellbeing/h/hand-washing/



Health New Zealand
Te Whaiti Ora

Ngā mihi!

Thank-you to all our whānau who help out with school trips, sports, fix-it sessions and special events. We couldn't do it without you!

SCHOOL HOLIDAYS
THE SCHOOL WILL BE CLOSED FROM
FRIDAY 11 APRIL FOR SCHOOL HOLIDAYS
WE'LL SEE EVERYONE BACK ON
MONDAY 28 APRIL

SCHOOL HOLIDAYS!

There are many activities happening over the school holidays. Check out the following fun programmes and events!

skids

Easter Countdown

24 March

WEEK 1: Egg-citing Experiments
Dive into the science of Easter with fun and spooky science experiments!

WEEK 2: Bunny Bake Off
Come and make your own Easter chocolate Easter Egg Hunt!

WEEK 3: Egg-stra Games
Take part in our fun Easter-themed games, like bunny hop race and bunny dance!

Page 10 of 10
How to book: visit www.skids.co.nz
Remember, the more you book, the more fun you'll have!

April Holiday Programme

CAPITAL GYMNASTICS

Come and join the fun at the Capital Gymnastics (Half and full day options available)

Fun Programme
Mon 14th - Thurs 17th
Tues 22nd - Fri 24th

Skills Programme
Tues 15th & Thurs 24th

Contact us for further information or book through our website

- 037 239 9139
- office@capitalgymnastics.nz
- www.capitalgymnastics.org.nz
- 11 Hutchison Road, Newtown

Hoake ki te Taiao City Nature Challenge

Central Park Night Event
Sunday 27th April, 6:00pm - 7:00pm

Explore the taiao at night with activities for all ages including spotlighting Mouturoa stream, searching for glow worms, and more!

All welcome, register by emailing:
Enviroschools community facilitator:
chloe.bisleywright@gv.govt.nz

Find out more

Badjelly the Witch

Adapted by Alexandra O'Sullivan from the book by Dipika Miligan

WHEN: 13 TH - 25 RD APRIL 2025
MONDAY - FRIDAY 10AM & 11:30AM SATURDAY 10AM
TICKETS \$16.00 PP. CHILDREN UNDER 2 FREE
77 SPECIAL PREVIEW, SATURDAY 12TH APRIL 2025
BOOKINGS: WWW.KIDZSTUFFTHEATRE.CO.NZ

April school holidays 12-27 April

The prehistoric Earth!

Learn about ancient landforms and the creatures that roamed them!

Use Greek or Latin to design your own dinosaur. Be a paleontologist for a day with GNS Science, travel back in time to search for specimens, try out a fun new craft activity, and much more!

Visit www.kidzstufftheatre.co.nz or scan the QR code for the full schedule of event times and locations.

New Zealand Museum of Natural History
Everyday is a science!

Wellington City Libraries

Wellington City Libraries

KIA NGĀKAU HIHIRI CURIOUS Ka miharo, ka tūpono, ka auaha tātou.
We wonder, take risks and innovate

AROUND OUR KURA

These last couple of weeks of term have centered around community. Check out some of what has been happening at the Raukura Reveal, Eid, Easter & Passover celebration.



Exhibition Wall

'An exploration through the ages'

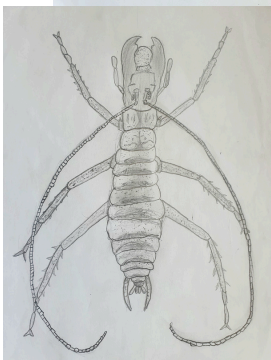
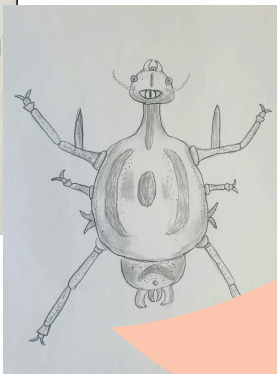
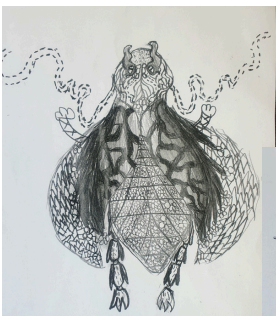
The Newtown School Exhibition Wall - first two weeks of Term 2.

To celebrate an astounding first term of drawing sessions with Paul we have a new exhibition on the exhibition wall to start term 2.

Drawing tutor and Art wall curator Paul Forrest has been taking 60 artists from Tūi Pōhutukawa and Waitangi on a journey looking into the world of insects. Over 300 drawings were produced by the 5-11 year olds and they were all amazing. The students focused like they've never done before and drew mainly in silence for up to an hour a session, concentrating and observing in great detail. From there they also began to leap into the world of imagining and creating their own insects.

On show will be a selection of 14 drawings capturing the quality and variety of the drawing tasks explored to give you a taste of the amazing talented students we have at Newtown school.

"I'm most proud and privileged to work alongside these young artists. Thank you to all the teachers and staff for their support with this ongoing artist residency. It's a wonder to behold" Paul



KIA WHAKAPAU KAHA
EFFORT

Ka whakapua i ō tātou kaha i ā tātou mahi katoa.
We give our best in everything we do.

Sports

Term 2 Sports

In term 2 students have the opportunities to sign up for netball, basketball, and futsal. As always, family helpers make these sports work. Please email sport@newtown.school.nz if you or your child want to get involved.



Our combined Y5/6 teams finished on a real high with a big win at 5pm and then a draw with an unbeaten team at 5:30pm this week. Some awesome goals, great passes and gritty defence. Best thing was the exclusively positive communication between the team, even when things weren't going their way.

CROSS COUNTRY: A big thank you to our whānau helpers, and a hearty congratulations to our young athletes who participated in our school oma roa - Cross Country! We are so proud of all our tamariki who worked hard and showed our values, particularly Kia Whakapau Kaha and Kia Manahau. Southern Zones will be on 20 May at Liardet Park!

Sports from this term: Thanks so much to all of our whānau helpers who have made sport succeed this term. It takes a lot of time and energy to make sport inclusive and fun for everybody. Our values of whanaunga - connection, kia manahau - resilience and kia whakapau kaha - effort - are grown when our students get the chance to participate in sport, whether they win or lose. This term our tamariki enjoyed junior netball, futsal, and touch rugby.

AS WELL AS SPORTS TEAMS TO JOIN, THERE WILL SOME GREAT SPORTING OPPORTUNITIES AT SCHOOL AGAIN NEXT TERM...

Swim Sport Trials - Students in years 4-7 who are proficient in swimming will be invited to take part in our swim trials for Southern Zone sports in term 2.

Kōtuitui Football - Through a funding partnership between New Zealand football, Sport New Zealand, Māori Football Aotearoa, and Capital Football, our students will get access to coaching across the school from local football coaches in school - 48 lessons in total! Students will learn football skills, develop their coordination and fitness, and grow their values in sports.

SCHOOL PLAY EQUIPMENT

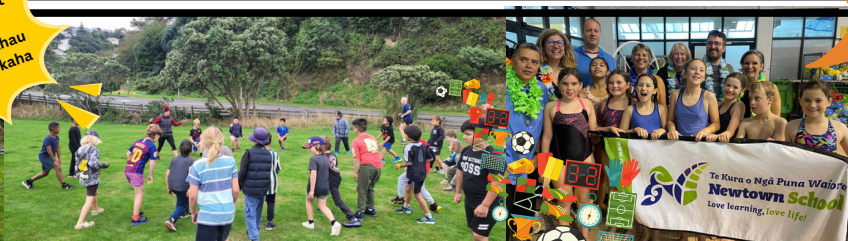
Sometimes our play and sport equipment comes walking home with our tamariki. If your child brings home a ball or something similar, please double check with their kaiako in case it needs to come back!



Congratulations to our mini-polo team who made it into semi-finals and then finals! A big shout out to the lively parent cheer squads too! Family support at our sports game encourages our young people and is a great time!



All of our tamariki at cross-country displayed kia manahau and kia whakapau kaha



Arts

Coming up in Term 2

Guitar lessons at Newtown School

Owen, our amazing guitar teacher has some availability for new students from term 2. Lessons are available for year 3 upwards and cost \$20 per week for a group lesson or \$36 per week for one-on-one lessons. We have some guitars at school that your child could borrow whilst learning to practise at home.

Artsplash 2025

Amazing news!! Artsplash is back and we are in!

ArtSplash is a week-long festival that celebrates tamariki and rangatahi on the big stage, and in 2025 it's growing! At ArtSplash, young people aged 5-13 are able to experience performing in world-class venues as part of dance and choral concerts.

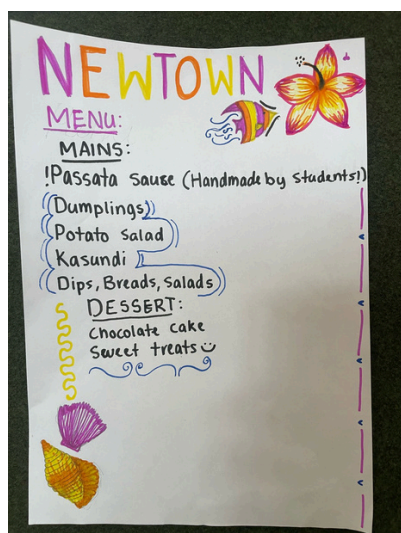
The concert will take place on either 25th, 26th, 27th or 28th August at the Michael Fowler Centre in Wellington CBD at either 5pm or 7.30 (hopefully 5pm) They are going to let us know as soon as they can - Artsplash is currently oversubscribed so they are trying to open up more space for other schools to join! Lucky we got in so quick!

Last night I went to the launch of the songs and there are some great choices! So from week 1 of Term 2 we will begin rehearsing, I am still confirming final times but it will either be a lunchtime or an afternoon during school. Once the 40 students have signed up they will be expected to commit to all rehearsals, as well as to learning all songs from memory. If you have never been to an Artsplash concert before believe me it is an amazing experience that the tamariki remember for a long time. Very excited!!

KIA MANAHAU E hia hinganga, katū tonu, ka ako tonu
RESILIENT We keep trying and learn from what we do



Garden Goodness



SEEDS TO FEEDS PICNIC DIMMER

Last Sunday 80+ people from our community had a gorgeous meal in our school hall. Delicious food lovingly grown and created within our community. Food included dumplings, passata (made by our students), kasundi, potato salad (potatoes harvested by waitangi students), meat and vegballs, pasta, dessert and drinks. Thanks to those from our school whānau who were able to make it along.
<https://www.seedstofeeds.nz/>



PASSATA MAKING DAY WITH SEEDS TO FEEDS AND GARDEN TO TABLE

Together with students from other Garden to Table schools, tamariki from Ngāti Kotahitanga and Waitangi helped make passata sauce from donated herbs and tomatoes. They then made pizza from scratch and shared it together.
<https://gardentotable.org.nz/>



Bike Fix ups

We are lucky enough to have a school bike fleet for our students to use while at school. These bikes have a tough life and from time to time need some extra love. Thanks so much to these parents (and tamariki) for giving up their time to help fix them. All hands welcome so please come along and learn at the next fix up (we aim to have these monthly, usually after school or on a Saturday).

Thanks to Nicole Lew, James Burgess, Ash Holwell and their tamariki, and Richard Hovey from Lodabike.



Dream BIG

Planting Help – We have a dream!

Every year we want to continue to re-forest our kura with more native plants and fruit trees. We'd like to also plant some trees that could be used for and learnt from within traditional Māori healing, known as rongoā. If you have any knowledge or interest in being involved and talking further please contact taniaa@newtown.org.nz.



Latest beekeeping

Students from Ngāti Kotahitangi are continuing on their bee learning...

this group saw the wonderful queen bee (not easy when she's surrounded by 1000s of bees!)



KIA MANAAKI
RESPECTFUL

Ka whakamana tātou i ngā rongo o te katoa.
We value the thoughts and feelings of each other.