



NEWSLETTER



Kia ora e te whānau,

Welcome back to the winter term! What dramatic weather last week-with schools closing, power cuts, branches down and huge gusts of wind. Newtown kura was actually quite sheltered so our children all played quite happily, much to many parents' surprise.

The start of term 2 is off to a flying start with Project Energise, African Connection, student teachers in all spaces, enthusiastic learners and strong teaching teams. What a way to begin.

Reporting. This term involves ongoing assessments and preparing learning records. The teaching teams are working towards sharing with you at the end of the term. We are confident that our reporting has good quality data about students' learning to ensure every learner is meeting their full potential. We know the power in students reflecting on their own learning and are proud of our learning records.

You may have heard about the release of a [Parent Portal](#) which is a Ministry of Education tool for parents to have a look at the curriculum content and progression of knowledge for students. You are welcome to explore what is on there.

Although providing a reflection of literacy and mathematics, we still know the many other areas that our students demonstrate their talents and learning. We also provide opportunities to sing, perform, create art, play sport, be part of Kapa haka, show leadership, care for others, be an eco warrior, grow vegetables and cook, serve others, build community, play...the list is long. It is helpful to know some of the building blocks of learning literacy and numeracy; however as parents, educators and part of this community, we also uphold many other aspects of what is important to us.

Understanding our kids Online World Invitation: This is an increasingly vital and challenging part of being a parent-navigating the digital world with your children. To increase your awareness and gain the tools to help your child be able to manage this healthily, come along and join this evening at SWIS on Thursday 22nd May 6:30-8:30pm. See more details below.

Thank you all for your support.

Ngā mihi nui,
Whaea Nicki
Tumuaki | Principal

WHANAUNGATANA
CONNECTED

He iwi tahi tātou, he ako tahi tātou
We belong and we learn together

Important dates

- 20 May - Southern Zone Cross Country
- 27 & 28 May - School photos
- 2 June - Kings Birthday Public Holiday (School closed)
- 3 June - Staff only Day (School Closed)
- 27 June - Last Day of Term 2

Welcome to our new students

- Arushi & Aradhya Sino
- Seerat Kaur
- Dhruv Hareesh
- Jahrhya & Jah-rose Rangiwhetu
- Aashlin Mukesh
- Kzhobe Cane Herbito
- Indie & Charlie May
- Alfie Lopez
- Derrick Anand
- Tāwharau Te Atawhai Kauika
- Miguel Montoya Perez

ARRIVAL TIME AT SCHOOL

How your child starts the day is important. Being at school in time to start the day with their classmates and teachers sets them up for a positive day of learning.

Please aim to have your students at school by 8:40am ready in class by 8:55am.



Attendance

It is really important that all children attend school every day unless they are sick. Every day attendance increases learning.

If your child is going to be away please call or email us.



04 389 6667



away@newtown.school.nz

SVOL Notices



School Photos

will be held on the 27th & 28th May
more information to come soon

South Wellington Intermediate School presents:

The Ultimate Parents Guide to...

Understanding our kids **Online World** and how to keep them safe.

- Cyberbullying
- Social Media
- Gaming
- Online Predators
- Online Porn
- Smartphones
- Filters
- Boundaries

Come and hear Filmmaker & Author Rob Cope in what promises to be a hilarious, straight talking Parent to Parent talk
Watch the promotional video here - [Our Kids Online Parent Evening](#).

THURSDAY 22ND MAY 2025 | 6.30PM - 8.30PM
30 WARIPORI STREET, WELLINGTON

Please use the following link to RSVP. Child supervision for the evening will be provided, so please include numbers of children coming along too.
[RSVP to Online Parent Evening](#)

“
Change to Staff only Day - We will no longer be having a staff only day on Friday 24 October before Labour Day on Monday 27 October - Staff only day will now be on Tuesday 28 October.
”

2025 School Elections coming up!
We are running a digital Election for the first time this year. Your child will be bringing home a form next week for you to double check we have all your correct details. For the Election we need an email address and phone number for each contact. Please return these to the office or your child's teacher as soon as possible.

CIRCUS

FREE TICKETS

We have been gifted tickets to Circus Quirkus, this Saturday 10th May at the Lower Hutt Events Centre for either 11am or 2pm.
Please come by the school office on Friday (today) if you would like tickets. First in first served.

Attendance update

We continue to reinforce the focus on everyone being at school as much as they can. The more your child is at school, the greater their learning. If your child is attending less than 70% then expect to be contacted by either a teacher, the office, a leadership member or the Principal. We will work very hard to have everyone here.

A random Maths noticing...If your child is only at 80% attendance this means they have missed on average one day a week. By the time they reach the end of year 5 (age 10), they will have missed an entire year of school. Let's not have that!

Attendance winners this newsletter...

Darby

Samantha



Come pick up your prizes from the office!

KIA NGĀKAU HIHIRI
CURIOUS

Ka miharo, ka tūpono, ka auaha tātou.
We wonder, take risks and innovate



Support the Creatives in School programme



Creatives in School has had an impact on our kura. Our butterflies and pou are evidence of the collaborative, creative projects that we have been part of previously. Artist Paul Forrest is very much part of our community and works to keep inspiring students to develop their artist talents. This programme is no longer going to be funded.

Have a [listen to this conversation](#) to understand what it is about. Help support their reinstatement by [signing the following petition](#)

Newtown parking scheme

Berhampore and Newtown parking scheme

Residential parking in Berhampore and Newtown is divided into three zones:

- Berhampore
- Newtown west
- Newtown east.

Within Berhampore, Newtown west, and Newtown east (from 24 June 2025), there are some **P180** spaces – the three-hour time limit applies **Monday-Friday, 8am-8pm**.

The current Berhampore and Newtown west parking scheme year runs until 23 June 2025.

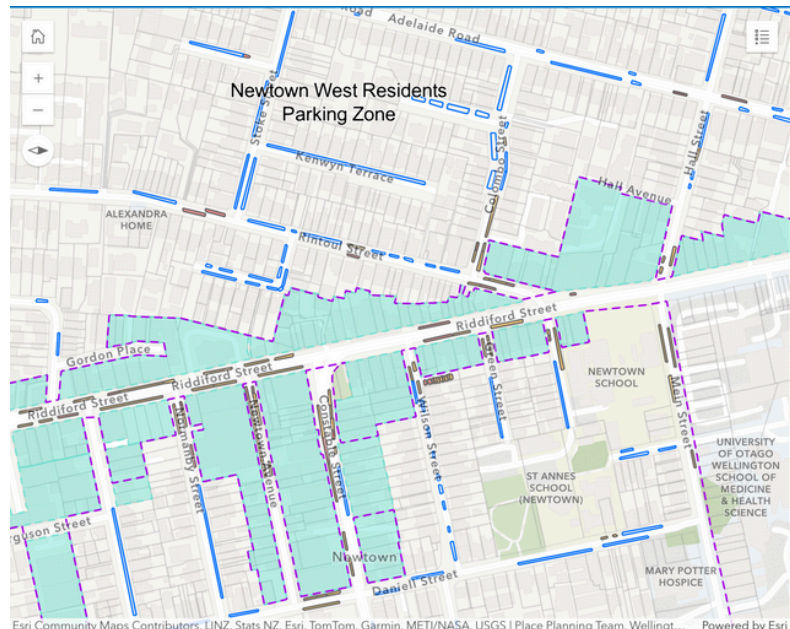
Newtown east (the hospital side) will join this scheme on 24 June 2025. Until then, current resident parking rules apply. Residents will be sent information about the scheme in early May.

For parking scheme year **24 June 2025–23 June 2026**, apply by **5pm, Friday 30 May 2025** if you want to be considered in the first round of permit allocation for Berhampore, Newtown east or Newtown west.

Berhampore and Newtown streets with parking time limits

Properties in **commercial zones** are excluded from the parking scheme and not eligible for resident parking permits or visitor day passes.

Check the [Berhampore and Newtown parking map and table](#) to see zones and which streets have some parking spaces with a three-hour time limit (P180).



Great to have you all here!

Welcome to our student teachers



You may have noticed some new faces around the kura this week. We are lucky to have a group of student teachers spending 6 weeks with us on placement. We have two masters students - India in Piwakawaka and Maia in Waitangi as well as four Grad Dip students - Iona in Tūi, Ko Htwe in Pōhutukawa, Brittany in Harakeke and Pauline who is wandering with Mitch. They have already made great connection with the tamariki and kaiako and are all developing their teaching skill in a reflective and personal way.

KIA MANAAKI
RESPECTFUL

Ka whakamana tātou i ngā rongō o te katoa.
We value the thoughts and feelings of each other.

SPORTS NOTICES

SPORTS UNIFORMS

A big call out for uniform tops - our term 2 players need tops. Please return tops not currently being used to the office

Futsal

year 1-4

Akau Tangi

Thursday afternoon

Southern Zone

Cross Country

20th May

Mcallister Park

ARTS NEWS

Artsplash Choir



The Newtown school Artsplash choir will be performing on **Tuesday August 26th at 5pm at the Michael Fowler Centre.**

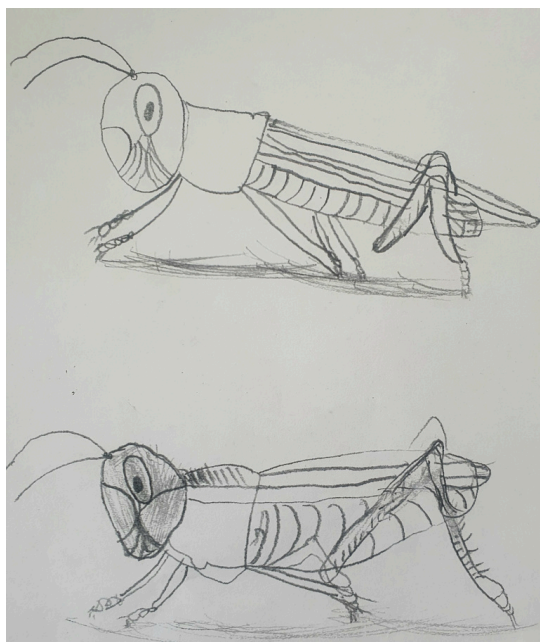
The choir is open to all tamariki from year 3-8 and takes place on Tuesday afternoon 1.30 - 2.15.

We have space for 40 singers to take part. At the moment we have about 60 rehearsing so priority will be given to choristers who rehearse regularly, demonstrate the school values during rehearsals and commit to learning the 9 songs.

The 40 students will be informed at the start of term 3. Tickets will be available closer to the time.

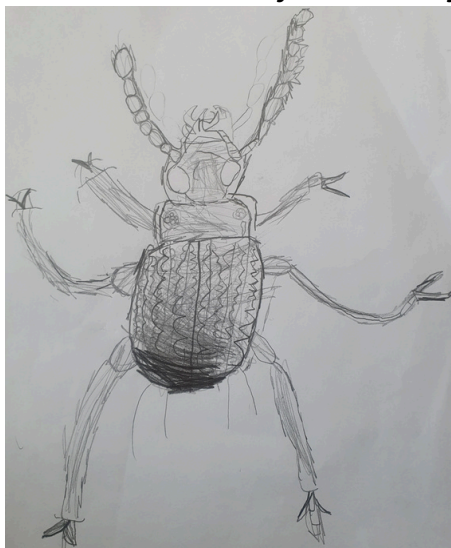
For any pātai please see Kath in Pōhutukawa or email kathf@newtown.school.nz

The Newtown School Exhibition Wall



'Insects by Pōhutukawa'

Monday 12th-26th May



This coming Monday the 12th a new exhibition of drawings grace the exhibition wall.

For 10 weeks now Drawing tutor and Art wall curator Paul Forrest has been taking artists from Pōhutukawa on a journey looking into the world of insects. Over 200 drawings have been produced by these mostly 6 year olds and they are all amazing. The students focused like they've never done before and drew mainly in silence for up to an hour a session, concentrating and observing in ever increasing detail.

On show will be a selection of 14 of those drawings capturing the quality and variety of the drawing tasks explored to give you a taste of the amazingly talented students we have in Pōhutukawa.

"I'm most proud and privileged to work alongside these young artists. It's a wonder to behold" Paul

KIA MANAHAU E hia hinganga, katū tonu, ka ako tonu
RESILIENT We keep trying and learn from what we do