



# NEWSLETTER



Kia ora e te whānau,

We are already half way through the term and your children are working hard and learning in many ways. We were glad to see the clear days and sunshine return this week.

I've been mulling over the challenging aspects of politics currently in our country and in the world, how it affects us and then how we respond as educators and parents. For myself, to stay hopeful, in times of challenge, focusing on education becomes even more crucial. Education equips young people with the tools to think critically, engage with complex issues, and contribute to society in meaningful ways. If we can provide a strong educational foundation, our tamariki learn to navigate these uncertainties with informed perspectives. They learn how to stand up for what they believe in, communicate with respect and clarity and often to problem solve with creative ideas and positive outcomes. This is the hope I keep returning to so I can recall ways we make a difference for our whānau and each other.

Finding ways to talk as a family can be challenging—we are torn between keeping the innocence of our children and fostering awareness of rights, responsibilities, and the workings of government. When students understand how political decisions affect their lives and communities, they are more likely to become engaged citizens who advocate for change, and hold leaders accountable.

In developmental psychology, we often say that children only ask the questions that they're ready to hear the answers to. We might assume that we need to fill in a lot more detail, when in fact they tend to be curious to an extent that is appropriate for their cognitive developmental level. A helpful tip is to remind your children that the country is very important to everyone, and we've had different life experiences that have led us to have different viewpoints. Our role is to listen more than talk and steer away from dismissing our child's concerns or questions.

Good luck talking through what matters to our whānau and our community. Together we are forming thinking, responsive and caring human beings.

Kia pai tō wiki mutunga.

Ngā mihi nui,

Whaea Nicki  
Tumuaki | Principal

## Important dates

- **27 & 28 May** - School photos
- **2 June** - Kings Birthday Public Holiday (school closed)
- **3 June** - Staff Only Day (school closed)
- **20 June** - Matariki Public Holiday (school closed)
- **27 June** - Last day of Term 2
- **14 July** - First day of Term 3
- **19 September** - Last day of Term 3
- **6 October** - First day of Term 4
- **27 October** - Labour Day Public Holiday (school closed)
- **28 October** - Staff Only Day (school closed) CORRECTION
- **18 December** - Last day of Term 4

## Welcome to our new students

- Sophia Taylor
- Vedanth Sukanya Vipin
- Jimi Gilbert

### ARRIVAL TIME AT SCHOOL

How your child starts the day is important. Being at school in time to start the day with their classmates and teachers sets them up for a positive day of learning.

**Please aim to have your students at school by 8:40am ready in class by 8:55am.**



### Attendance

It is really important that all children attend school every day unless they are sick. Every day attendance increases learning.

**If your child is going to be away please call or email us.**



04 389 6667



away@newtown.school.nz

# SCHOOL Notices



## School Photos

will be held on the 27<sup>th</sup> & 28<sup>th</sup> May  
More details will be sent home on Monday

### WORKING BEE

**Sunday 8th June  
2-4pm**

Come along on Sunday 8th June, bring your gardening gloves and spade and help us plant out the garden along Mein Street next to the field.

If you can help pick up some mulch and deliver to school please let Tania or Nicki know

**SCHOOL WILL BE CLOSED**  
**Public Holidays &  
Staff only days**

TERM 2: Monday 2 June-Kings Birthday  
Tuesday 3 June - Staff only day  
Friday 20 June - Matariki  
TERM 3 : Monday 27 October - Labour Day  
Tuesday 28 October - Staff Only Day  
(CORRECTION)

### Teacher Only Day

now just \$30!

We've revamped our Teacher Only Days!  
Each day has a unique theme and an array of exciting and engaging activities  
Join us at skids Newtown from (8:30am - 3:00pm)

Join us at **Newtown Music Mayhem**  
**Tuesday 3 June 2025**

Some of the awesome activities you can expect to see:

- Sound Art
- Backbeat Poppers
- Popcorn Stick Kana

You can add on our **Blue Skin Shave and Stay** and **Play sessions** to extend the day to 7:00pm - 4:00pm

<https://www.skids.nz/location/newtown/>

Join us for Musical Fun!  
SCAN TO BOOK ONLINE NOW

## Student Profile Sheet

You should have received a copy of the details we hold for your child/children.

Please check these details - update any that have changed. Sign the form and return it to the school office.

## Attendance is important

We continue to reinforce the focus on everyone being at school as much as they can. The more your child is at school, the greater their learning.  
In Term 1, 65% of students were at school over 90%.  
Our wero (challenge) this term is to beat this!

Attendance winners this newsletter...

Mataio

Zeeyah

These two students have been at school over 90% this term and randomly selected to receive a prize. Come pick up your prizes from the office!

Is your child well enough to go to school? Check out guidance for parents and caregivers here:  
[Te Whatu Ora](#)

If you can't access a doctor or you don't have one, you can call **Healthline** on 0800 611 116 anytime 24/7 for free health advice. Interpreter support is available.

Free health advice when you need it

**Healthline**  
0800 611 116

KIA NGĀKAU HIHIRI CURIOUS Ka mīharo, ka tūpono, ka auaha tātou.  
We wonder, take risks and innovate





## Compost Workshop: Sunday 8 June 1-1.45pm

Meet by the green bike container -  
learn some simple ways to  
compost and keep the smell away  
at home (its ok if you don't have a  
compost bin)



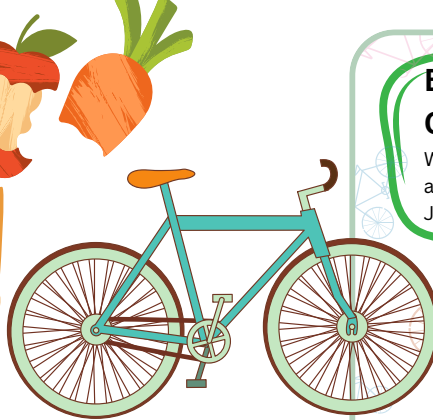
### GUITAR LESSONS

We are still hoping to enrol new guitar  
pupils at Newtown School. The guitars  
have been restrung and are ready to  
play!

If you are interested in learning to play  
the guitar please contact Dynamite  
Music.

Lessons are \$20 per week for a group  
lesson or \$36 per week for an individual  
lesson.

We have a little budget to help with costs  
if this is an issue for you or your whānau.  
Please come and talk to us or email Kath  
at [arts@newtown.school.nz](mailto:arts@newtown.school.nz).



### Bike Fix Ups: Can you help?

We will be fixing up our school bike fleet  
at our School Working Bee on Sunday 8<sup>th</sup>  
June if you are able to help.



## Last call for Artsplash members

Artsplash choir is up and running for all year 3 and above  
preparing for the concert on Tuesday August 26th.  
Rehearsals take place in the music room every Tuesday  
after lunch. There is one more week for new members to  
join up, although we are limited to taking just 40 to the  
concert. (My huge apologies for not getting back on time  
this week, choristers!) They are sounding amazing!!

-Kath



## SPORTS NEWS

Congratulations to all those who  
participated at the Southern Zones  
Cross Country. We are extremely  
proud of the effort that was shown  
at the event. We have 5  
participants who have qualified for  
Interzones in week 7!



COMING  
SOON

### Talofa Lava

We are celebrating Samoan  
Language Week from the 1-7 June 2025  
The nationwide theme for Samoan  
Language Week is 'la malu lou sã. Folau i  
lagimã – A well-grounded self, is a  
successful self"

We look forward to celebrating with you  
and your fanau. Details will be out soon.  
Manuia Fa'afetai.



### Fiafia Night at Newtown Library

Ngā Puna Waiora  
Friday 30 May  
5 - 8pm

Nau mai rā tātou katoa  
Everybody is welcome

Afio mai as we celebrate le Vaiaiso o  
le Gagana Samoa (Samoan  
Language Week) with performances  
and kai.

Bring family and friends, everybody  
is welcome!!

[wcl.govt.nz](http://wcl.govt.nz)

Wellington  
City Libraries

Whānau Pūnaha  
Wellington City Council

KIA WHAKAPAU KAHA EFFORT Ka whakapua i ō tātou kaha i ā tātou mahi katoa.  
We give our best in everything we do.



# AROUND OUR KURA

## PINK SHIRT DAY

*Speak UP*  
**STAND TOGETHER  
STOP BULLYING**



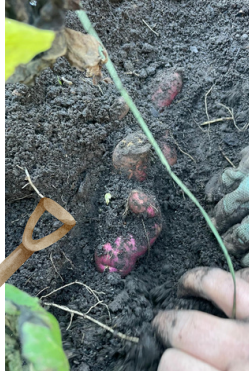
## Garden Goodness

Kūmara harvest and eating! Last September we started growing kūmara tipu (seedlings), we planted them in November and started harvesting in May with great success.

Tamariki have been involved in the whole process, including cleaning and preparing them for storage (Matariki breakfast), cooking, donating and eating.

Do you have any old Gumboots or garden spades, trowels lying around?

We are in need of some larger gumboots. Youth / adult sizing 3 and up.



## SPORTS



Ngā Puna  
Waiora  
champions!  
All the values  
on display!



## TRIPS OUT



## Support Staff Week

Last week we had the opportunity to express our thanks to our support staff. Kaiako selected a random information sheet that had been completed by our support staff. Throughout the week they got to give presents or make hot drinks for their person as a way of saying 'ngā mihi' for all the work they do and the partnership we have. We then had a big morning tea to further acknowledge our gratitude for these support staff heroes. We are very grateful to our amazing support team and all that they do both at the forefront and behind the scenes. Support staff - we love you!

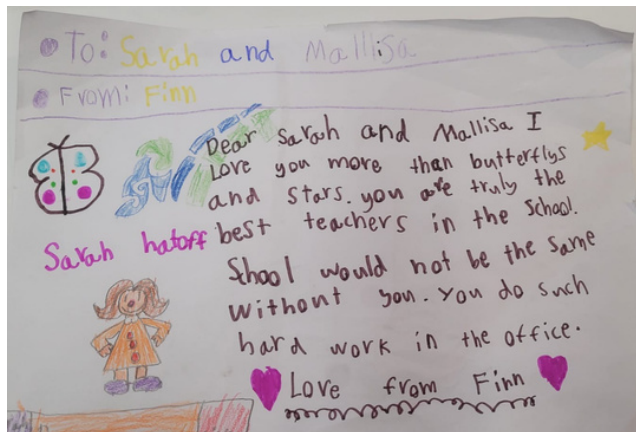


KIA MANĀAKI  
RESPECTFUL

Ka whakamana tātou i ngā rongo o te katoa.  
We value the thoughts and feelings of each other.



## Who works in our office and what do they do?



This week Melissa and Sarah received the following poster... it is now laminated and on their wall. What do they do that allows someone to write this?

All day they need to remain caring, friendly and helpful. It is the most interrupted job I have ever witnessed!

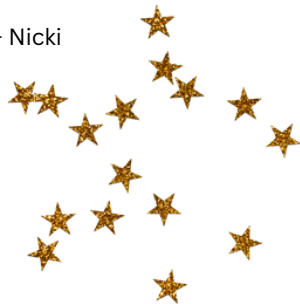
They get shared stories from tamariki of bruises, wiggly teeth, and random playground noticing. They also receive insect gifts and the latest weather reports.

They are our frontline medical communicators and they are the calm and reassuring voice on the end of the phone call when your child has been upset, bumped their head, feels sick, needs to go home, or has muddy trousers. It's a tough role but they love it - so they tell me ;)

This is only some of what they do while they juggle their many tasks such as: school attendance, accounts, staff pay, school trips, school notices and numerous requests.

THANK YOU FOR **ALL** THE THINGS THAT YOU DO FOR US - ALL DAY, EVERY DAY! **YOU ARE LEGENDS!**

- Nicki



Melissa & Sarah

## Welcome to Robbie



Kia Ora Koutou,  
Ko Robbie tōku ingoa.  
Nō Whanganui ahau, e noho ana ahau ki Newtown ineiane.  
Ko Nush rāua ko Junie āku tamahine.  
E hiamō ana ahau ki te tūtaki i a koe.  
Mauri Ora ki te katoa.

Hi, I'm Robbie.

You may have seen me around school as a parent, I'm Nush's dad. I'm stoked to be joining the wonderful crew at Newtown School.

Raised on a hill country sheep station, I studied in Wellington in younger years and settled back here more recently with the whanau and my old heading dog, Bangarang.

I've been a TA at Berhampore school for 3 years previously, since then I've also been a massage therapist and a web developer for Storypark while in Wellington.

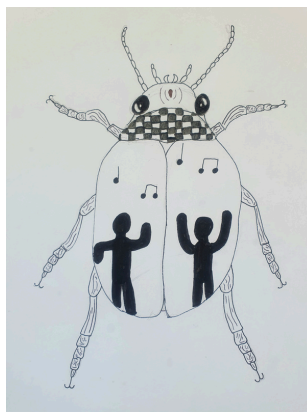
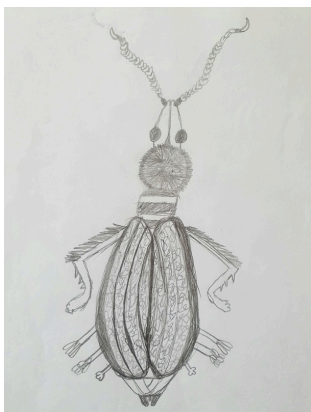
**Come say hi if you spot me around!**

Check it out!

### **'Imagined Insects by Waitangi Artists' The Newtown School Exhibition Wall - 23rd May - 5th June.**

A new exhibition of drawings grace the exhibition wall this week. As well as studying insects in great detail I've also thrown the students a provocation to create their own insects. I'm delighted to say they rose to the challenge with the same degree of skill with humour thrown in. They're delightful and very accomplished.

On show will be a selection of 14 of those drawings to give you a taste of the amazingly talented artists we have in Waitangi. I'm most proud and privileged to work alongside these young artists. It's a wonder to behold - Paul



**KIA MANAHAU** E hia hinganga, katū tonu, ka ako tonu  
**RESILIENT** We keep trying and learn from what we do